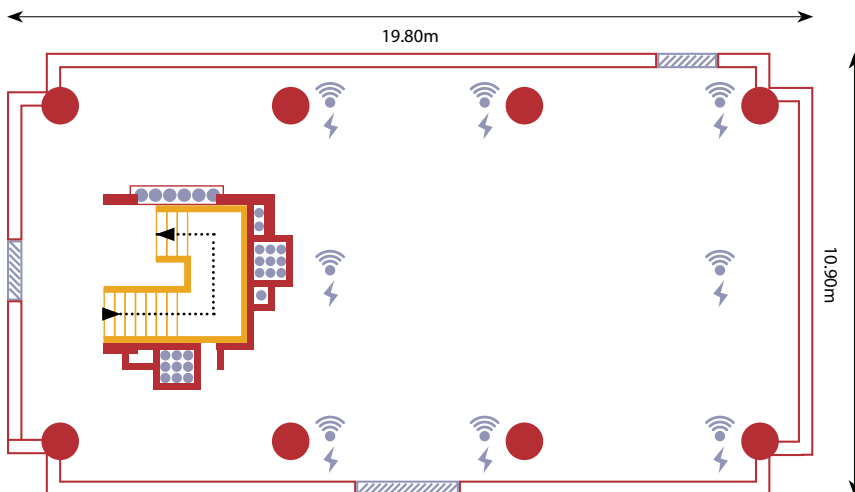




ROOM GUIDE: Max Rayne Atrium



CAPACITIES

Reception: 200
Standing Buffet: 150
Seated Buffet: 60
Banquet: 80

DIMENSIONS

Length: 19.80m
Width: 10.90m
Height: (highest point): 8.69m

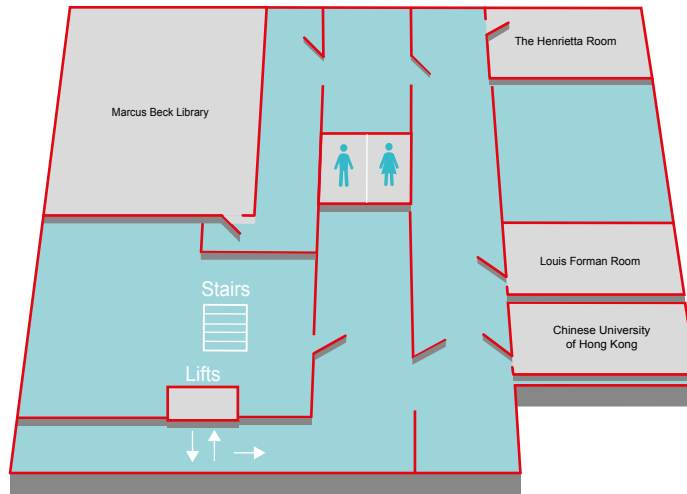
KEY ITEMS INCLUDED IN ROOM HIRE

- Internet access with Wi-Fi
- Vaulted glass ceiling

- ⚡ Power Plug
- 📶 Wired Internet Access
- Pillar
- //// Glass Doors
- ▭ Glass Window
- ▬ Step
- Plants

FLOOR GUIDE

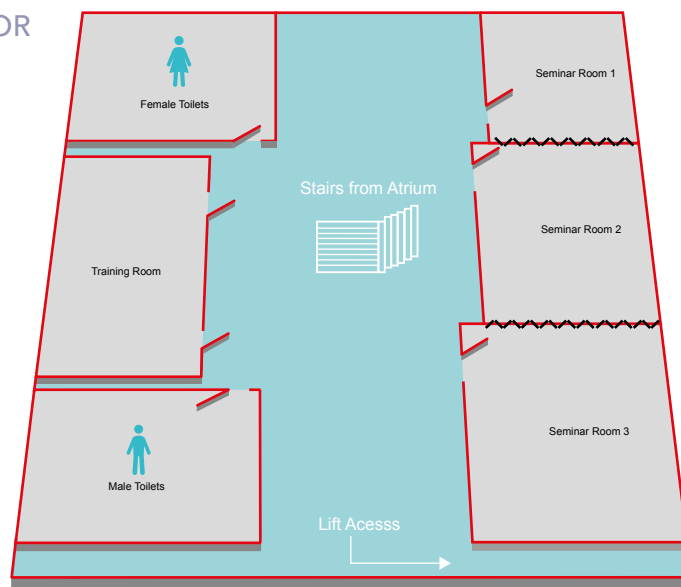
3rd FLOOR



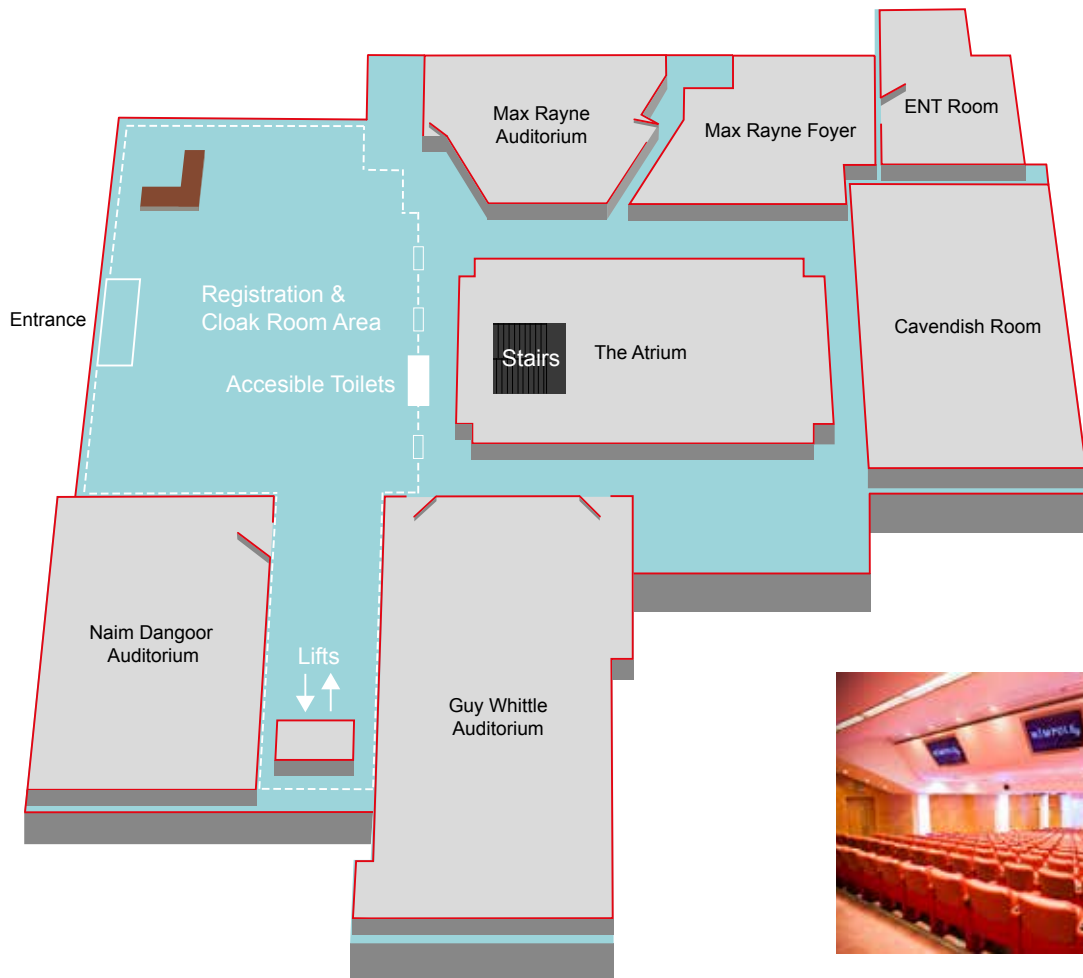
GROUND FLOOR



LOWER GROUND FLOOR



GROUND FLOOR



Guy Whittle Auditorium



Naim Dangoor Auditorium



ENT Room



The Atrium



Max Rayne Auditorium

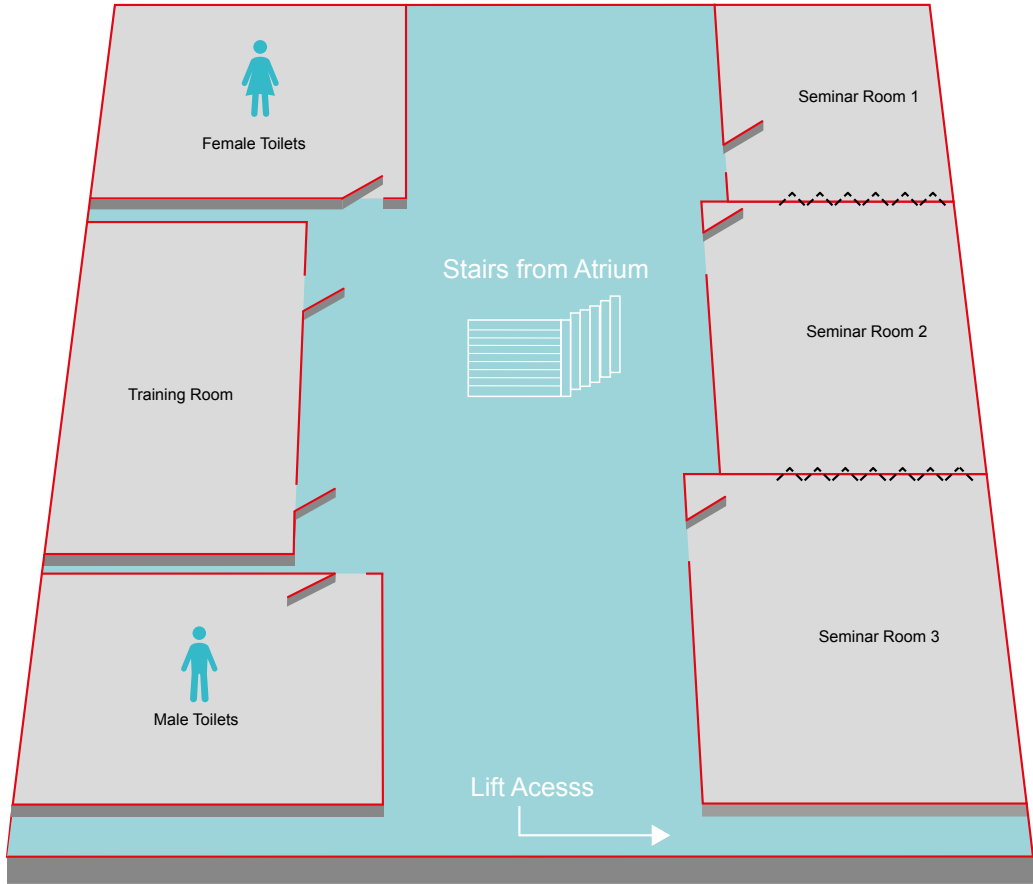


Max Rayne Foyer



Cavendish Room

LOWER GROUND FLOOR



Seminar Room 1



Seminar Rooms Entire Suite

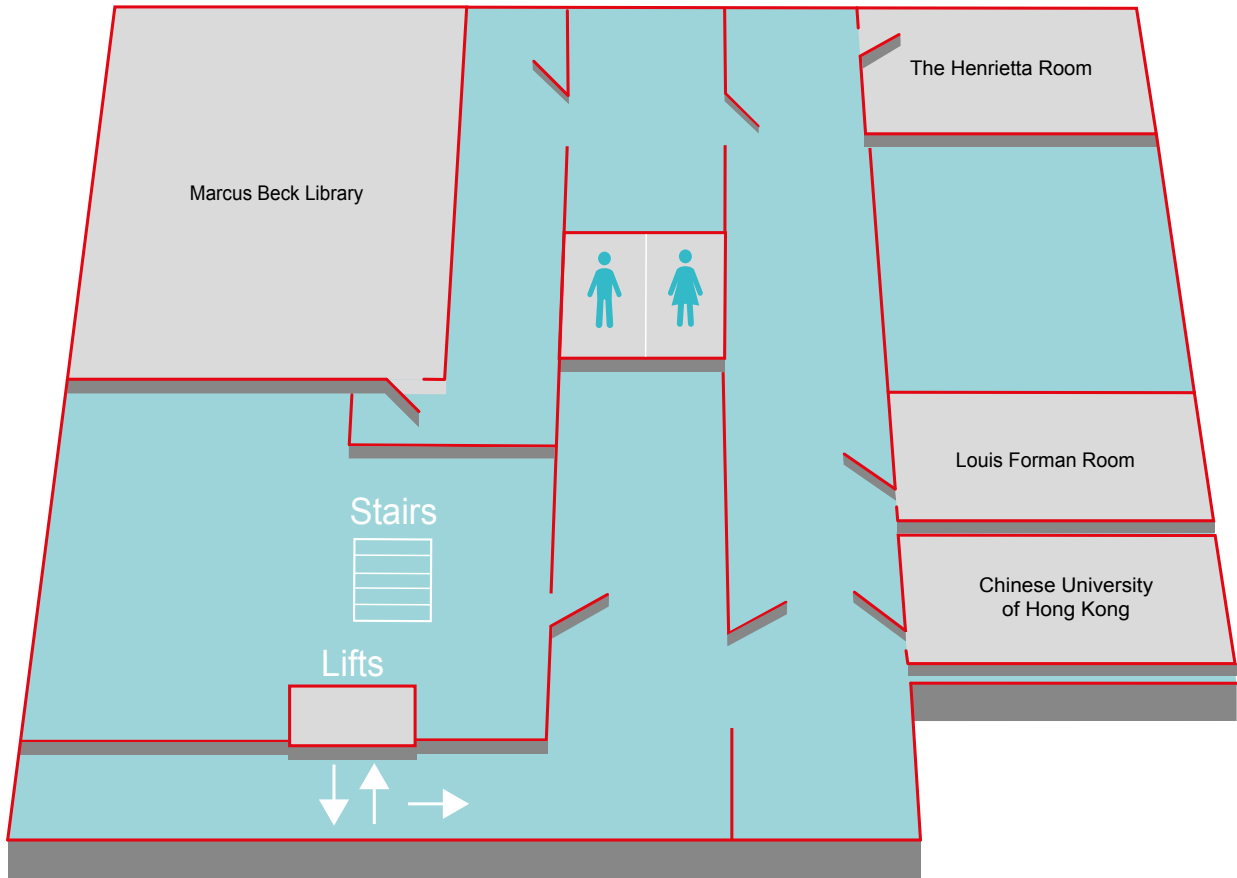


Training Room



Seminar Room 3

3rd FLOOR



The Henrietta Room



Marcus Beck Library



Chinese University of Hong Kong



Louis Forman Room